

- 2024 Storm Improvements Quantities
- 1 Each Dr Structure Tap, 12 inch
  - 1 Each Sewer Tap, 12 inch
  - 1 Each Dr Structure, Rem
  - 270 Ft Sewer, C.I.A., Sch 40, 12 inch, Tr Det B
  - 1100 Sft Sidewalk, Conc, 4 inch
  - 520 Sft Sidewalk, Conc, 6 inch
  - 800 Sft Sidewalk Ramp, Conc, 6 inch
  - 10 Ft Detectable Warning Surface
  - 350 Syd Slope Restoration

Notes:

ALL trenching materials shall remain in the Street right of way.

Project Scope:

The intent is to remove a root bound section of storm sewer and replace with new PVC. Contractor shall excavate to locate the existing PVC section which was installed prior and connect to this section of PVC.

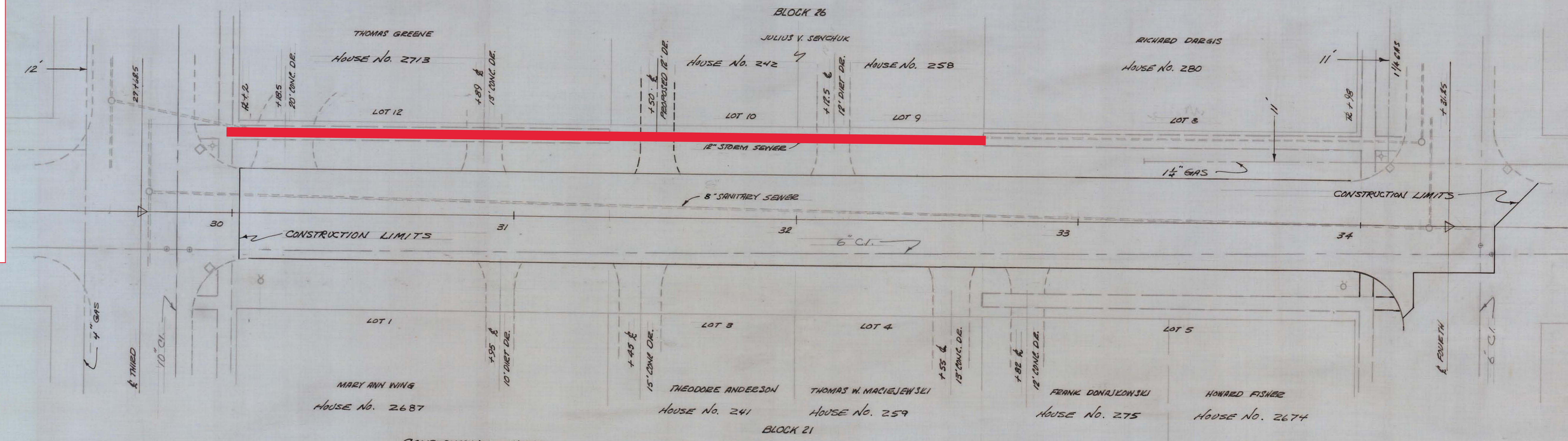
Protect driveways and trees in place. Sidewalk, Conc, 6 inch has additional quantities to include an additional 3 feet on each driveway, if needed.

Project terminates in the manhole in the northeast quadrant of Third Avenue. Protect existing manhole and curb in place and replace ramps as directed by the engineer.

B.M. # D-43 ELEV. 605.63  
F.H. STAIR. HUB - THIRD & LAWN

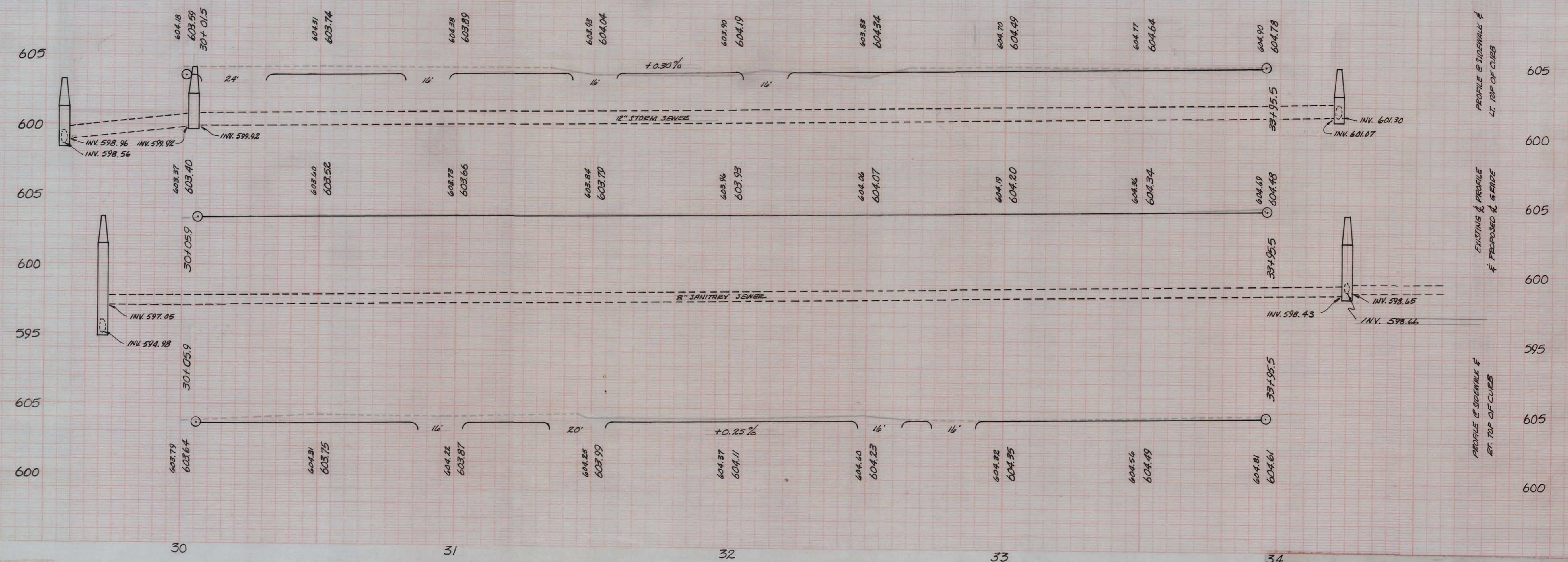


B.M. # D-32 ELEV. 606.19  
F.H. STAIR. HUB - FOURTH & LAWN



CONSTRUCTION NOTES:  
MEET EXISTING RETURNS AT THIRD & MEET EXISTING RETURN LEFT AT FOURTH, INSTALL 20' RADIUS RT. AT FOURTH, ADJUST M.H. AT STA. 34+24, & WATER VALVE RT. AT STA. 34+46, CURBS SHALL BE 31" B.-B., 6" GRAVEL BASE, SALT STABILIZATION, & 2" BITUMINOUS SURFACE, VARIABLE CROWN.

NOTE:  
PROFILE VIEW OFFSET FROM PLAN VIEW



72 RC 73c L AS BUILT 8-73

DRAWN JWS	CHECKED	APPROVED	CODE
SCALE 1"=20'-0"	DATE JAN 7, 1972	CITY OF ALPENA CITY HALL ALPENA, MICHIGAN	
TITLE LAWN ST. C/I/A			
LAWN - THIRD - FOURTH			
PROFESSIONAL ENGINEER			

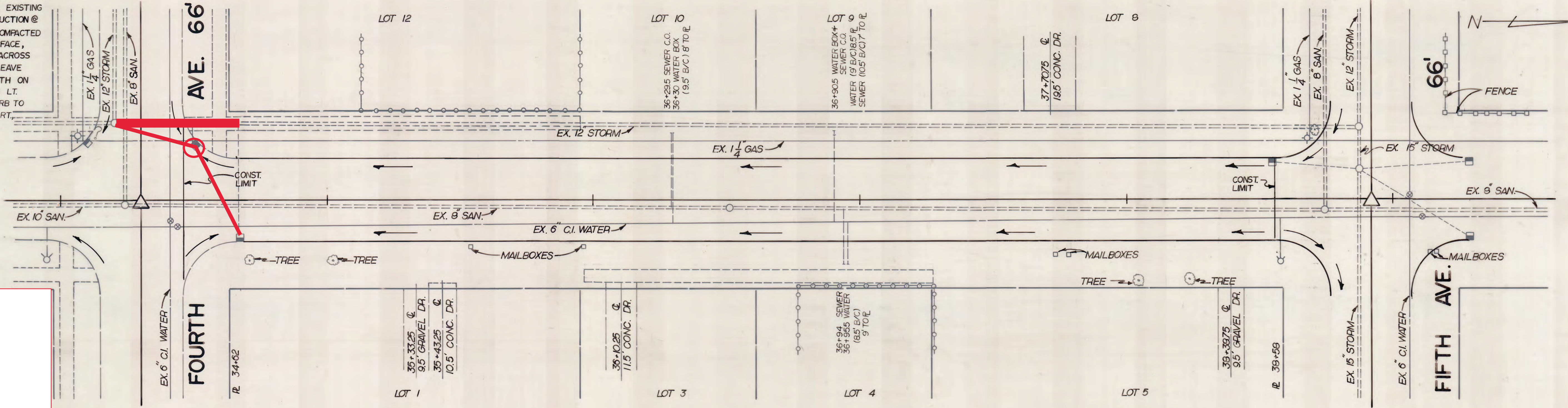
# LAWN ST. 66'

BM. ELEV. = 606.70 F.H. STMP. HUB @ 4TH AND LAWN

BM. ELEV. = 608.27 F.H. STMP. HUB @ 5TH AND LAWN

### CONSTRUCTION NOTES

CURBS SHALL BE 3' B/C TO B/C, REPLACE EXISTING RADI L.T.+R.T. AT FOURTH, BEGIN CONSTRUCTION @ STA. 34+46 AND END @ STA. 38+55.5, 6" COMPACTED GRAVEL BASE, 2" MIXED BITUMINOUS SURFACE, CROWN = 1/4" FT., INSTALL SIDEWALK RAMP ACROSS FOURTH ON THE WEST SIDE OF LAWN, LEAVE SIDEWALK RAMP OPENINGS ACROSS FOURTH ON THE EAST SIDE OF LAWN. MEET EX. CURB LT. 38+51.5 RT. STA. 38+54.5 REMOVE CURB TO EXP. JOINTS FIFTH 38+51.5 LT. 38+54.5 RT., RELOCATE MAIL BOXES IF NECESSARY



### 2024 Storm Improvements Quantities

- 1 Each Dr Structure Tap, 12 inch
- 1 Each Dr Structure Tap, 8 inch
- 1 Each Sewer Tap, 12 inch
- 1 Each Sewer Bulkhead
- 1 Each Dr Structure, 24 inch, with Cover and Casting
- 40 Ft Sewer, C.I.A. Sch 40, 12 inch, Tr Det B
- 60 Ft Sewer Lead, C.I.A. Sch 40, 8 inch, Tr Det B
- 35 Ft Curb and Gutter, Conc. Det C4
- 150 Sft Sidewalk, Conc. 4 inch
- 150 Sft Sidewalk Ramp, Conc. 6 inch
- 10 Ft Detectable Warning Surface
- 100 Syd Slope Restoration

### Notes:

ALL trenching materials shall remain in the Street right of way.

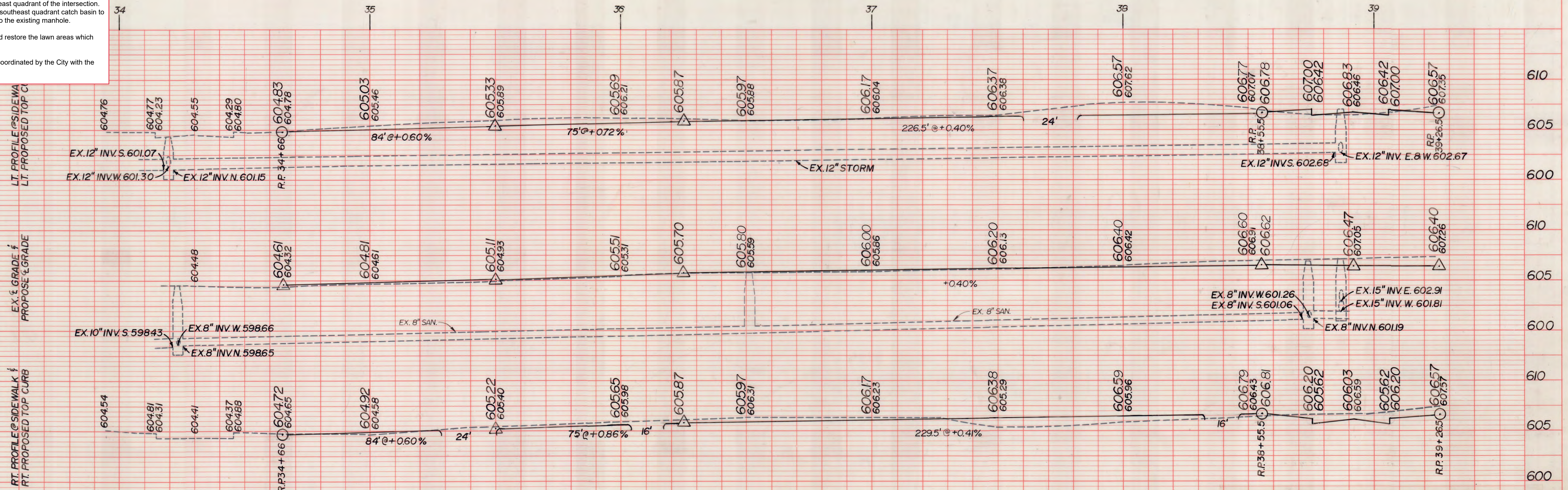
### Project Scope:

The intent is to Remove a root bound section of storm sewer and replace with new PVC. Contract shall excavate to and remove blind storm tap and replace with new storm to the existing manhole.

Install a new catch basin in the northeast quadrant of the intersection. Install new storm leads from existing southeast quadrant catch basin to the newly installed catch basin then to the existing manhole.

Replace northeast quadrant ramp and restore the lawn areas which were disturbed.

HMA surface will be by others to be coordinated by the City with the contractors.



PLAN SURVEYED BY DATE  
 PLOTTED BY DATE  
 NOTE BOOK No. 11-21-94  
 STRUCTURE NOTATIONS CHECKED

PROFILE SURVEYED BY DATE  
 PLOTTED BY DATE  
 NOTE BOOK No. 11-21-94  
 STRUCTURE NOTATIONS CHECKED

87 RC 73b L

ROADWAY FEDERAL AID SHEET  
 PLATE 1-SINGLE PLAN AND PROFILE-FULL LINE  
 PRINTED IN U.S.A.

AS BUILT DEC-87

DRAWN	F.M.O.	CHECKED	APPROVED	CODE
SCALE	1" = 20'	DATE	11-21-94	
LAWN ST. - 4TH TO 5TH				
CITY OF ALPENA CITY HALL ALPENA, MICHIGAN				
PROFESSIONAL ENGINEER				