

City of Alpena

News Release of May 30, 2017



PULL RIGHT FOR EMERGENCY VEHICLES

In an emergency, we want our police, fire and EMS responders to arrive as quickly as possible to help us. But do we do everything we can to make that possible?

CONTACT

Bill Forbush
Fire Chief
989-354-1840

Joel Jett
Chief of Police
989-354-1800

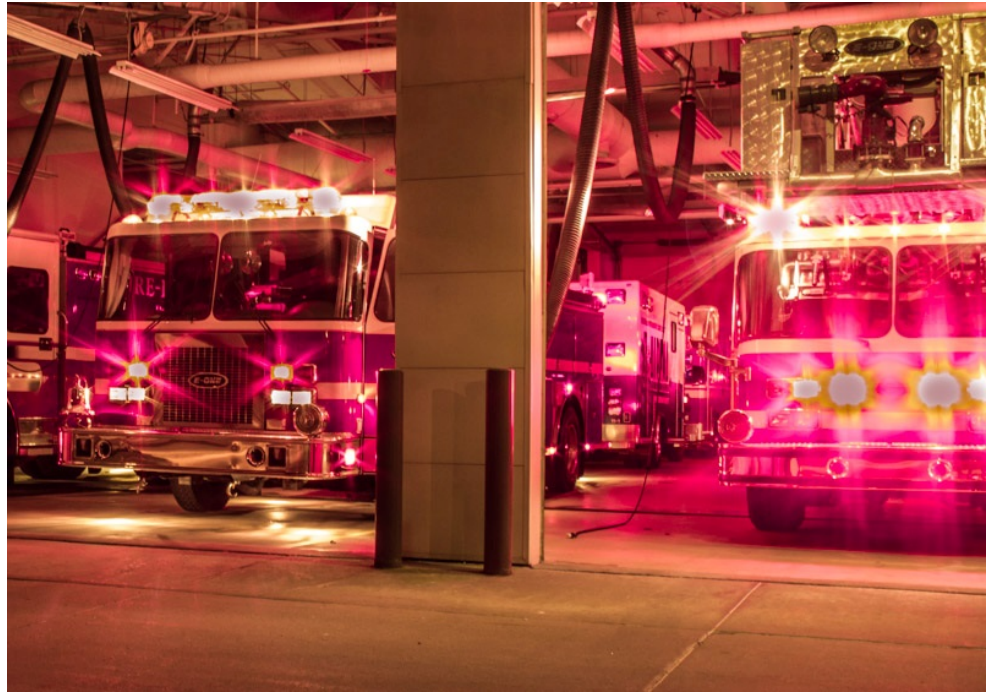
501 W. Chisholm St.
Alpena, MI 49707
989-354-1850
billf@alpena.mi.us

One of the simplest ways is to **pull over** upon the approach of an authorized emergency vehicle. Emergency vehicles include law enforcement, fire vehicles and ambulances, as well as privately owned vehicles of on-call firefighters and EMS personnel. Under the Michigan Motor Vehicle Code, these vehicles must display red or blue flashing lights and a siren. The law states *“the driver of another vehicle shall yield the right of way and shall immediately drive to a position parallel to and as close as possible to the right-hand edge or curb of the roadway, clear of an intersection, and shall stop and remain in that position until the authorized emergency vehicle has passed, except when otherwise directed by a police officer”*.

Emergency vehicle drivers are trained to always pass on the left, and may cross into oncoming lanes to do so, so it is important that other drivers pull to the right and stop. Never drive to the left of an emergency vehicle, or turn in front of them.

If motorists yield right-of-way to oncoming emergency vehicles, it is possible to respond quickly and smoothly to emergency scenes, shaving seconds or minutes off the time victims are waiting for help.





Alpena Fire Chief Bill Forbush shared that “we depend on the cooperation of motorists to get our crews safely and quickly to emergencies. This is even more important in a rural community like ours, as longer distances can extend response times.”

Another statute, the Michigan Emergency Vehicle Caution Law, requires that motorists *move over* when passing a stopped emergency vehicle or tow truck with its emergency lights on. When possible, move over into the next adjacent lane. If that is not possible due to traffic, slow down and pass carefully, leaving as much room as possible. Violation of the law is a misdemeanor. Motorists face up to fifteen years in prison and a \$7500 fine if emergency personnel are killed or injured.

For more information, contact the Alpena Police or Fire/EMS Department.